

Plans of Shortlisted Brownfield Clusters
for which Consultancy Services for Engineering Feasibility Studies
were procured by Government
(Second Phase Review)

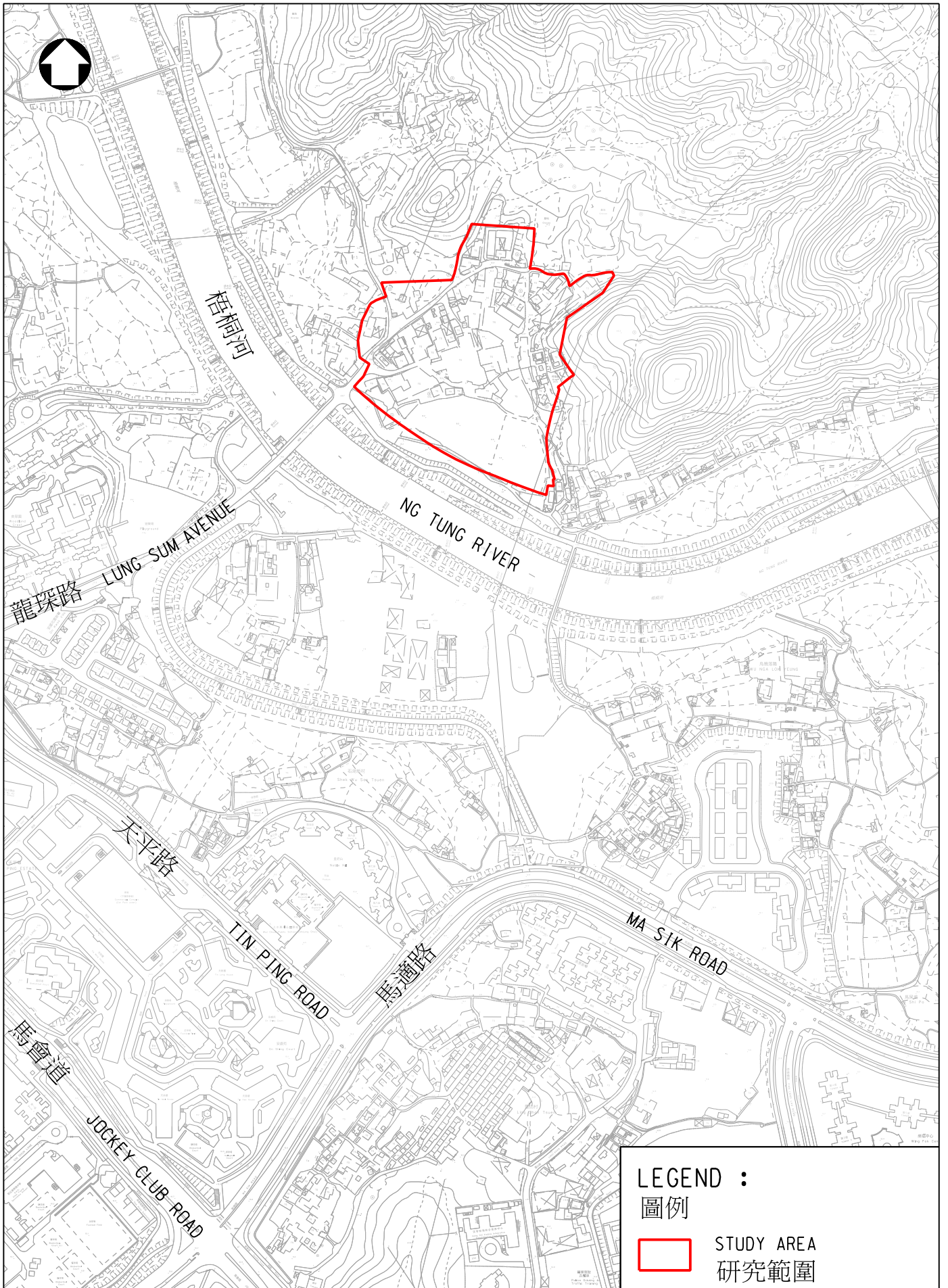
政府招聘顧問以進行工程可行性研究之選取的棕地群圖則
(第二階段檢視)

Remarks:

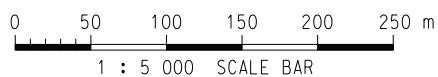
- 1) The proposed study area as shown in the drawing is indicative only. The Government of Hong Kong Special Administrative Region (“the Government”) will conduct an engineering feasibility study with reference to the proposed study area to work out the findings of the preliminary engineering assessments and, to formulate the development boundary of the site with other relevant Government departments for the purpose of zoning amendment covering the proposed public housing development; government, institution or community facilities; and other associated infrastructure provisions; etc.
- 2) It should be noted that the land requirements for some of the infrastructure provisions such as road and sewerage works may be located in close proximity to and/or completely outside the proposed study area depending on the nature and scope of the works required. All these requirements will not be shown and covered in the drawing.
- 3) The information provided by the Government on this website is for general information only. Whilst the Government endeavours to ensure the accuracy of this general information, no statement, representation, warranty or guarantee, expressed or implied, is given as to its accuracy or appropriateness for use in any particular circumstances. The Government accepts no liability for any loss or damage whatsoever arising from or related to the use of such information.

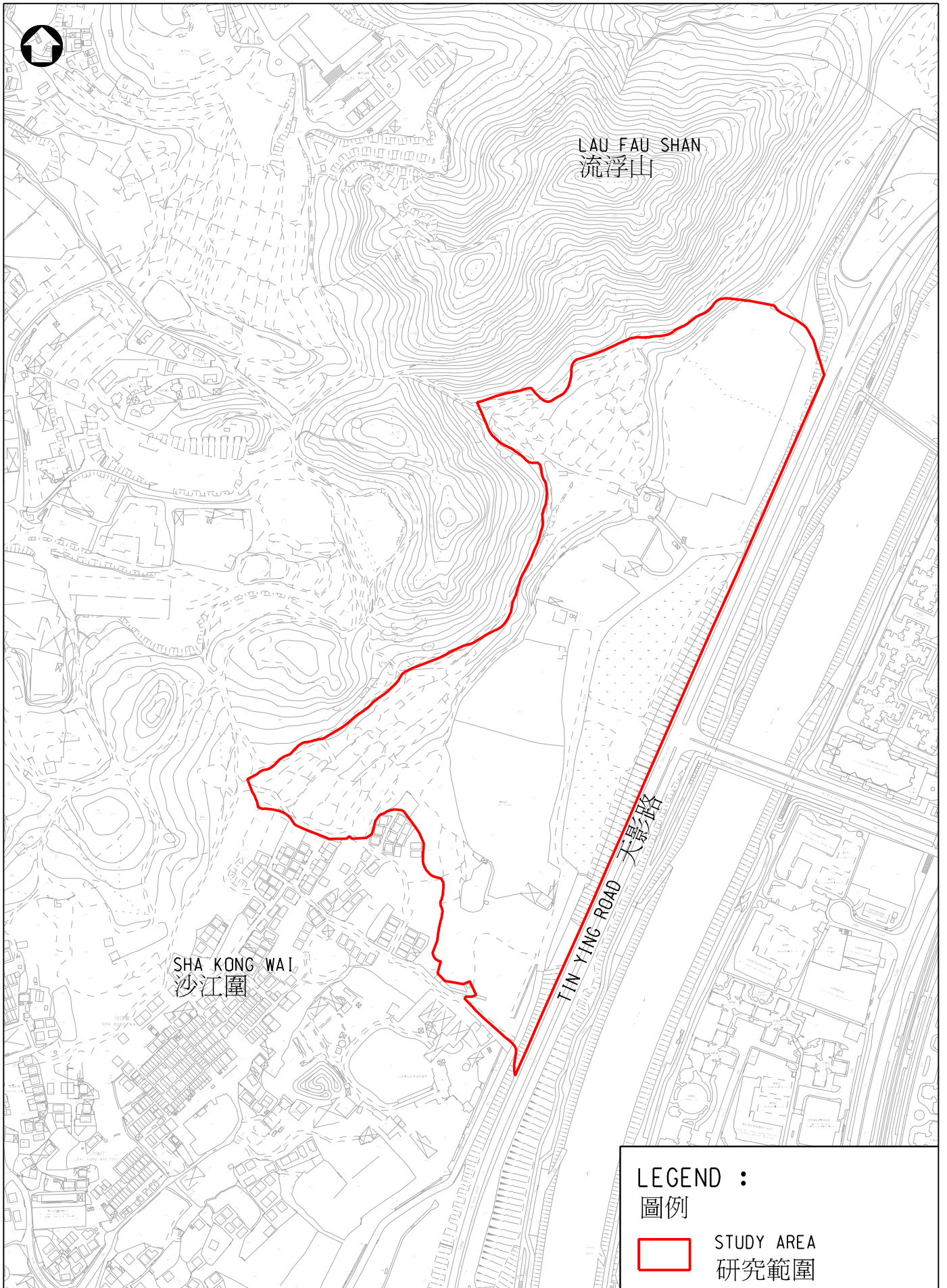
備註：

- 1) 圖中所示的建議研究範圍僅作參考。香港特別行政區政府(下稱「政府」)會參照擬議的研究範圍進行工程可行性研究，以得出初步工程評估的結果，並與其他有關政府部門共同制訂該地的發展界線，及進行修訂相關土地用途地帶，以涵蓋擬議的公共房屋發展；政府、機構或社區設施；及其他相關的基建設施等。
- 2) 政府會因應工程的性質和範圍而擬議有關工程所需的用地，部分基礎設施如道路和排污設備工程等，所需的用地可能會在建議研究範圍附近及／或完全在該範圍以外。故此，有關建議工程所需的用地都不會在圖中顯示和涵蓋。
- 3) 政府在本網站登載的資料，僅供一般參考用途。雖然政府已盡力確保該等資料準確無誤，但對於在任何特定情況下使用該等資料是否準確或恰當，並沒有作出明示或隱含的陳述、申述、保證或擔保。對因使用或關乎使用該等資料而引致的任何損失或損害，政府概不負上法律責任。

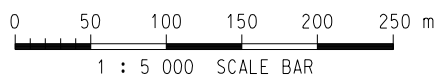


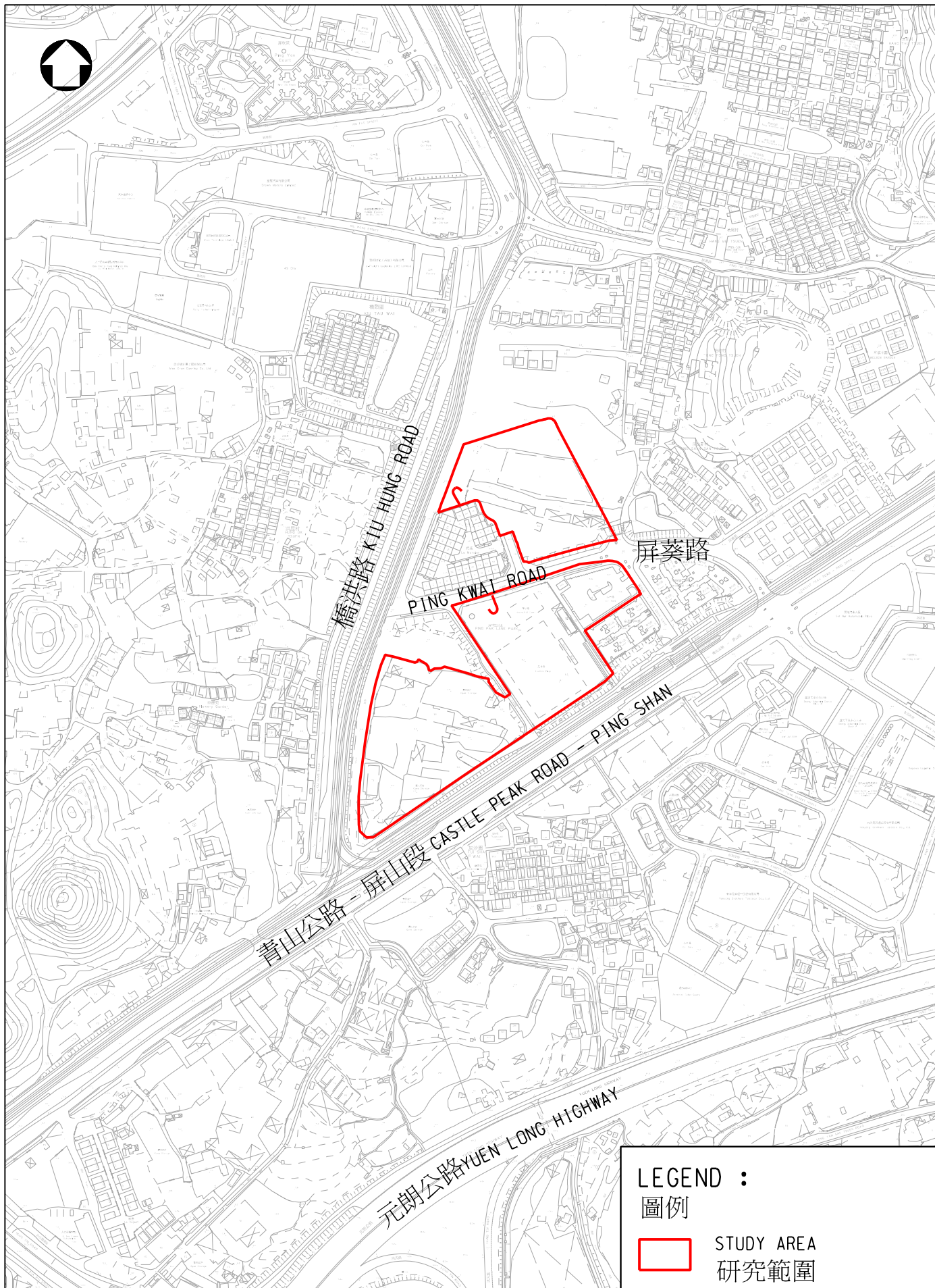
Potential Public Housing Cluster at Wa Shan, Sheung Shui
具公營房屋發展潛力的棕地群 - 上水華山



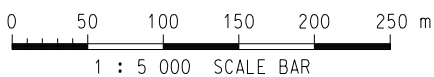


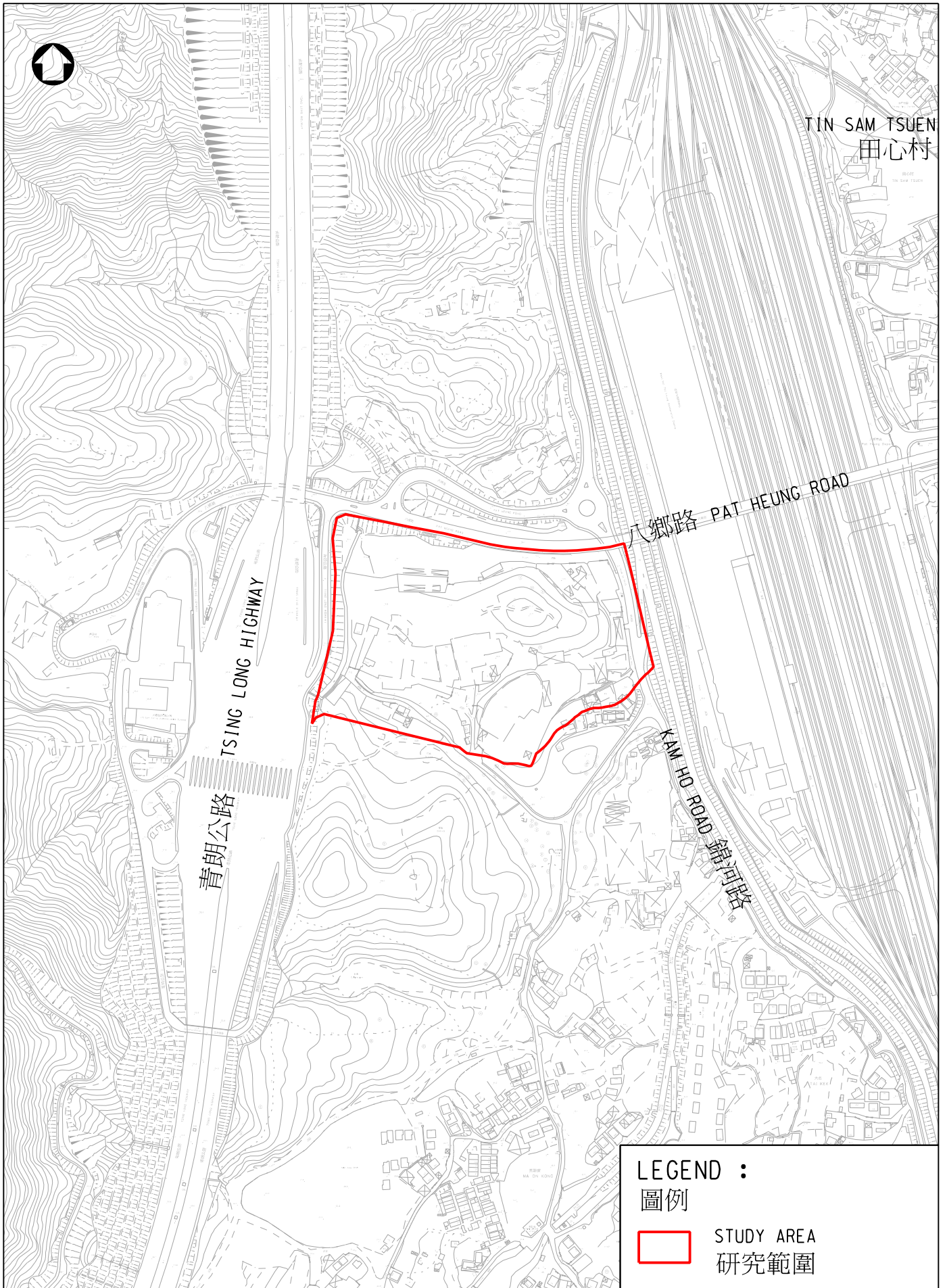
Potential Public Housing Cluster at Sha Kong Wai North, Yuen Long
 具公營房屋發展潛力的棕地群 - 元朗沙江圍北





Potential Public Housing Cluster at Ping Kwai Road, Yuen Long
具公營房屋發展潛力的棕地群 - 元朗屏葵路





Potential Public Housing Cluster at Kam Ho Road, Yuen Long
具公營房屋發展潛力的棕地群 - 元朗錦河路

